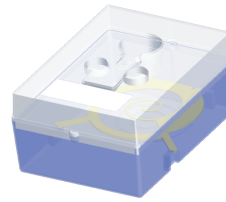


## CALIBRATION QUICK REFERENCE

# ScanPoint®

### 1 Prepare Calibration Phantom

Place on flat, non-reflective surface; fill with clean, room temperature water to indicator mark; make sure water contains minimal amount of bubbles



### 2 Place Instrument in ScanPoint® Docking Station

ScanPoint® Docking Station



### 3 Log On to ScanPoint®

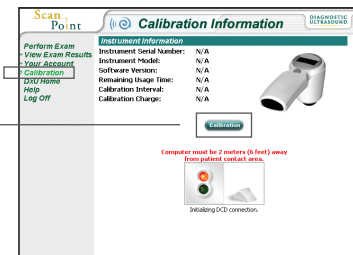
First enter login name and password, then click Sign in button

Login name  
Password  
Sign in

A screenshot of the ScanPoint software's sign-in interface. It features a teal header with the text "Sign in". Below the header are three input fields: "Login Name:", "Password:", and a "Sign in" button. At the bottom, there is a link that says "Get help with sign in Customer Service".

### 4 Select "Calibration" on ScanPoint® Menu

Calibration option  
Calibration button



### 5 Click the Calibration Button

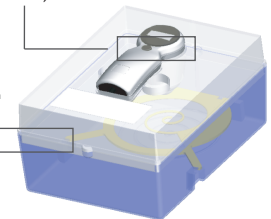
### 6 Wait While ScanPoint® Prepares Instrument

### 7 When Prompted, Scan Calibration Phantom

Place Instrument in lid. Ensure that black tip of scanhead is submerged in water. Then press the Top (Gender) button.

Top (Gender) button

Water line



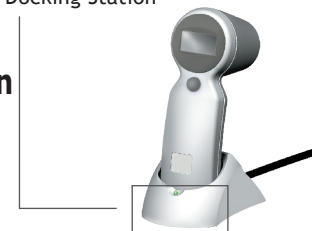
### 8 Wait While Instrument Calibrates

Four arrows appear on the LCD screen when analysis of the calibration data is complete.

ScanPoint® Docking Station

### 9 Return Instrument to ScanPoint® Docking Station

### 10 Select "Print" Message to Print Certificate of Calibration



Calibration



[www.verathon.com](http://www.verathon.com) <https://my.scanpoint.com>

For more information, call 800.331.2313 (in the U.S. and Canada) or contact your local Verathon Medical® representative. ScanPoint®, Verathon®, and Verathon Medical® are either registered trademarks or trademarks of Verathon Inc. in the United States and/or other countries. Copyright © 2006 by Verathon Inc. All rights reserved.

0900-0621-06-60

## CALIBRATION QUICK REFERENCE

Scan  
Point®

- 1** To prepare **calibration phantom**, place on a flat, non-reflective surface and remove lid. Pour clean, room temperature water into the container, filling to the indicator mark. Make sure the water contains a minimal amount of bubbles. Then place the **spiral-shaped target** in the container, using the notches to position target correctly. Replace the lid on the calibration container.
- 2** Place the scanning unit in the **ScanPoint® Docking Station** connected to your computer.
- 3** Go to ScanPoint® by double-clicking the **ScanPoint® icon** on your Windows® desktop, or by opening Internet Explorer and typing **https://my.scanpoint.com** in the browser's address bar. Then, to log on, type your **Login Name** and **Password** on the Sign in screen and click the **Sign in** button.
- 4** On the ScanPoint® menu, click **Calibration**. Verify that ScanPoint® has successfully initialized the connection with your scanning unit by checking the status box, which contains red and green lights and is located in the lower half of the Calibration screen. The connection was successful if the green light is highlighted. If the red light is highlighted, verify that you positioned the scanning unit correctly in the ScanPoint® Docking Station.
- 5** Click the **Calibration button** on the Calibration Instrument screen.
- 6** Wait while ScanPoint® prepares the instrument, by installing the calibration program on your device, and creates a calibration record in the database. When complete, the message **"Go make Phantom measurement and return device to ScanPoint® Docking Station...waiting..."** is highlighted.
- 7** Remove the scanning unit from the ScanPoint® Docking Station and place it in the cutout in the top of the calibration container. Make sure the black tip of the scanhead is submerged in the water. Then press and release the **Top ("Gender") button** (located on top of the scanning unit, below the LCD screen).
- 8** Wait while the instrument scans the phantom and calibrates. **Important: Do not remove the instrument from the phantom until four arrows appear on the LCD screen.** The instrument beeps once when the scan is complete and then proceeds to analyze the scan data to ensure that it meets the calibration parameters; the instrument may automatically rescan the phantom, if necessary. When calibration is complete, the instrument chirps and four arrows appear on the LCD screen.
- 9** Return the instrument to the **ScanPoint® Docking Station** and wait while it transmits the calibration results to ScanPoint®. ScanPoint® then removes the calibration program from your device and prepares the instrument to perform patient exams. Do not remove the scanning unit from the ScanPoint® Docking Station until this process is complete.
- 10** When the calibration process is complete, the scanning unit beeps and ScanPoint® displays the message, **"Calibration Successful."** If you wish to print a certificate of calibration, click the message, **"Click Here for Printable Certificate of Calibration."**



Calibration