

Designed for 1<sup>st</sup> Pass Success

## COBALT Single-use System

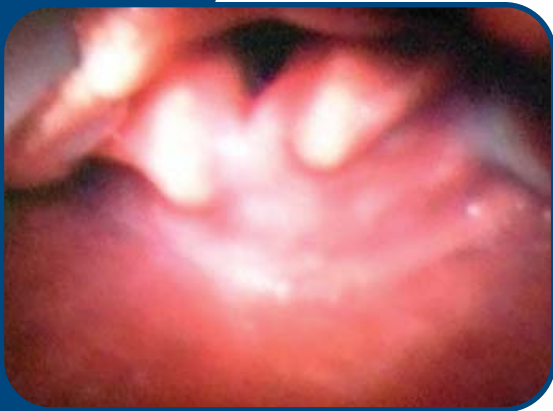
Optimized for demanding OR, ED and ICU applications, the GlideScope® Cobalt provides a clear view, enabling quick intubation in unpredictable airway conditions.

The combination of a single-use, sterile Cobalt GVL® Stat and GlideScope® video baton is ideal for fast-paced intubation settings. No waiting for disinfection.

Cobalt provides a real-time view of the airway and tube placement.

- **Reusable video baton** houses integrated high resolution camera; patented anti-fogging mechanism resists lens contamination

- **GVL® Stat** design based on current GlideScope® GVL®, which achieves a Cormack-Lehane Grade I or Grade II view 99%\* of the time
- GVL® Stat supplied in sterile packaging, ready for use
- Available in Large and Small sizes
- 60-degree blade angulation designed to view anterior glottis without need for direct line of sight
- **Non-glare color monitor**



View achieved with the  
GlideScope® Cobalt System





# GLIDESCOPE®

Video Laryngoscopes

Designed for 1<sup>st</sup> Pass Success


## COBALT Single-use System

### System includes:

- Reusable, clean (non-sterile) video baton
- Protective video baton cradle for convenient access
- GVL® Stat—single-use, sterile blade(s)
  - Large GVL® Stat
    - Patient Weight: approx. 88 lbs. to morbidly obese
    - Blade Length (tip to handle): 95.0 mm
    - Blade Thickness (max): 16.5 mm
    - Blade Width (max): 27.5 mm
  - Small GVL® Stat
    - Patient Weight: less than 88 lbs.
    - Blade Length (tip to handle): 80.0 mm
    - Blade Thickness (max): 16.5 mm
    - Blade Width (max): 21.0 mm
- Non-glare color monitor



The GlideScope® Cobalt Video Laryngoscope may be used interchangeably with the Portable Systems shown.



**On Mobile Stand**

A stand-alone configuration for use in a variety of hospital settings

Power Source: Battery and/or AC power

Monitor weight: 3.2 lbs.

Mobile stand weight: 3.3 lbs.




**In Hard Shell Case**

Portable monitor can operate from within or independent of the hard shell case

Ideal for mobile and/or remote emergency applications

Total weight: approx. 8.8 lbs.



**On IV Pole Mount**

Easily integrates into all standard hospital environments

Monitor weight: 3.2 lbs.

IV pole mount weight: 2.2 lbs.

Call 800.331.2313 today for more information,  
or visit [www.verathon.com](http://www.verathon.com).



The GlideScope® video laryngoscopy systems are CE marked in accordance with the Medical Device Directive, and the Verathon Inc. quality system is Quality System Certified to ISO 13485:2003 standards. US Patent No. 6,655,377; 6,543,447; International patents pending.

0900-1416-01-86



**Corporate Headquarters**  
2000 North Creek Parkway / Bothell, WA 98011-8218 USA  
425.867.1348 / 800.331.2313 / 425.883.2896 Fax  
[www.verathon.com](http://www.verathon.com)