

1




Turn on the BladderScan® BVI 9400 by pressing the POWER ON/OFF button.

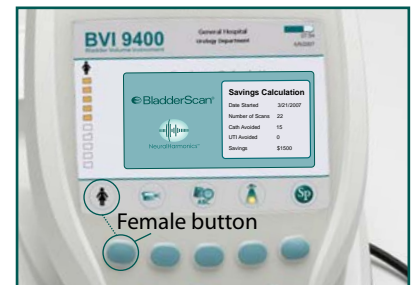


2

Select scanning mode

The BladderScan BVI 9400 is designed to scan in three patient-specific modes. Select the proper exam mode to ensure the accuracy of your scan. Simply press the button repeatedly until the desired setting appears:

-  Select to scan a male patient, or a female patient who has had a hysterectomy
-  Select to scan a female patient who has not had a hysterectomy
-  Select to scan a small child under 48 inches (122cm) tall and weighing less than 60 lbs (27kg)



3

With the patient supine, apply gel

Have the patient lie in the supine position with abdominal muscles relaxed.

Palpate the patient's symphysis pubis (pubic bone). Place an ample quantity of gel (with as few air bubbles as possible) midline on the patient's abdomen, approximately one inch (3 cm) above the symphysis pubis.



4

Aim toward the bladder

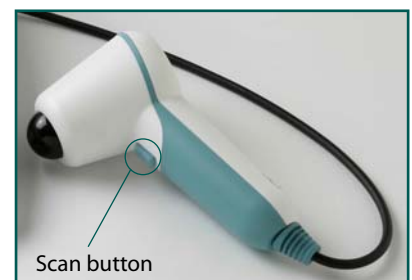
Standing at the patient's right side, place the Probe on the gel and aim toward the expected location of the bladder. For most patients, this means tilting the Probe slightly toward the patient's coccyx (tailbone) so the scan clears the pubic bone.



5

Press the SCAN button

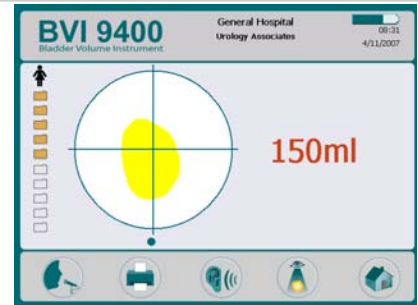
Press the SCAN button, located on the underside of the Probe. As the scan progresses, sections of the bladder will appear on the console screen. When you hear the end-scan tone, the scan is complete.



6

Verify the scan

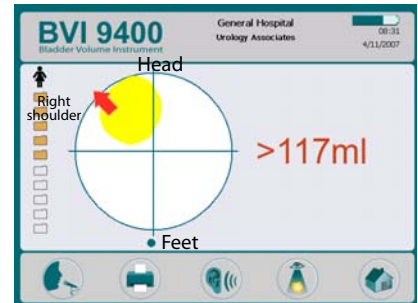
If the scan is **"on target"** all 8 arrows will flash on the Probe screen, and the bladder will be shown in the center of the crosshairs on the Console screen. Since no re-aiming is needed, no arrows will appear on the Console screen.



6a

Re-aiming

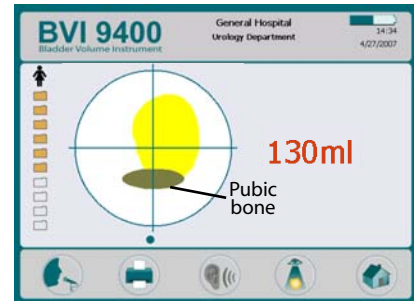
If the scan is **"off target"** the Probe will show an arrow indicating the direction to move the Probe to be **"on target."** If the arrow is solid, it means you are slightly **"off target."** If the arrow is flashing, it means you are significantly **"off target"** and must re-aim and re-scan. On the Console, the bladder will not be on the crosshairs, and there will be an arrow pointing in the direction for re-aiming.



6b

To re-aim

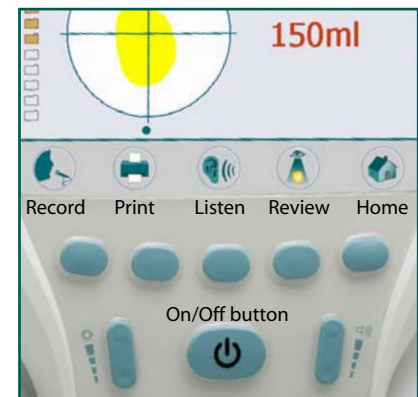
To **re-aim**, note that the small dot at **"6 o'clock"** on the Console target represents the feet of the patient. The **"12 o'clock"** position represents the head of the patient and the upper left quadrant (9-12 o'clock) represents the right shoulder of the patient. This orientation should help you in re-aiming the Probe to capture the complete bladder in the ultrasound **"cone."**



6c

Pubic Bone

You may also see a screen that indicates the pubic bone is **"inside"** the ultrasound cone. If this occurs, you may want to re-aim and re-scan. Although the bladder may be shown as centered in the ultrasound cone, and your measurement could be complete, there is a possibility that the pubic bone is obscuring some of the bladder. By re-aiming, you can ensure you have captured the bladder fully inside the ultrasound cone.



7

Save, review and print exam results

To **save** the exam, you must annotate it.

To **annotate**, press and release the RECORD button on the Console. When you see the RECORD button icon turn to a STOP button icon, record your patient information by speaking into the Probe microphone. Press the STOP button on the Console. When the hourglass icon disappears, press the LISTEN button to replay the annotation.

To **review** the images of your scan, press the REVIEW button (you must first save the exam before you can review it).

To **print** exam results via on-board printer, press the PRINT button.

To **perform another exam**, press the HOME button.

8

Finish exam

Once you have completed the scan, wipe the ultrasound gel off the patient and the Probe.

For ScanPoint[®] subscribers, logging on to ScanPoint[®] automatically transfers and saves your annotated exams.

To order additional rolls of paper (0800-0319) or batteries (0400-0066), contact Customer Care at 800.331.2313.

www.verathon.com <https://my.scanpoint.com>

For more information, call 800.331.2313 (in the U.S. and Canada) or contact your local Verathon Medical[®] representative.
Verathon Corporate Headquarters: 20001 North Creek Parkway, Bothell, WA 98011, USA. Phone: +1.425.867.1348
VM Europe B.V.: Boerhaaveweg 1, 3401 MN IJsselstein, The Netherlands, Phone: +31.30.68.70.570

